



A Sovereign
Indian Nation

Climate Change Planning at La Jolla

Process and Current Planning Efforts



Why Work on Climate Change

- CC questions
- CC uncertainty
- Unsure how to start
- What are the concerns
- How would it benefit us





Native Communities and Climate Change: Protecting Tribal Resources as Part of National Climate Policy

Executive Summary

A Report Published by the Natural Resources Law Center at the University of Colorado Law School
In Conjunction with the Western Water Assessment at the University of Colorado



Jonathan M. Hanna, NRLC Research Fellow, Principal Author & Editor

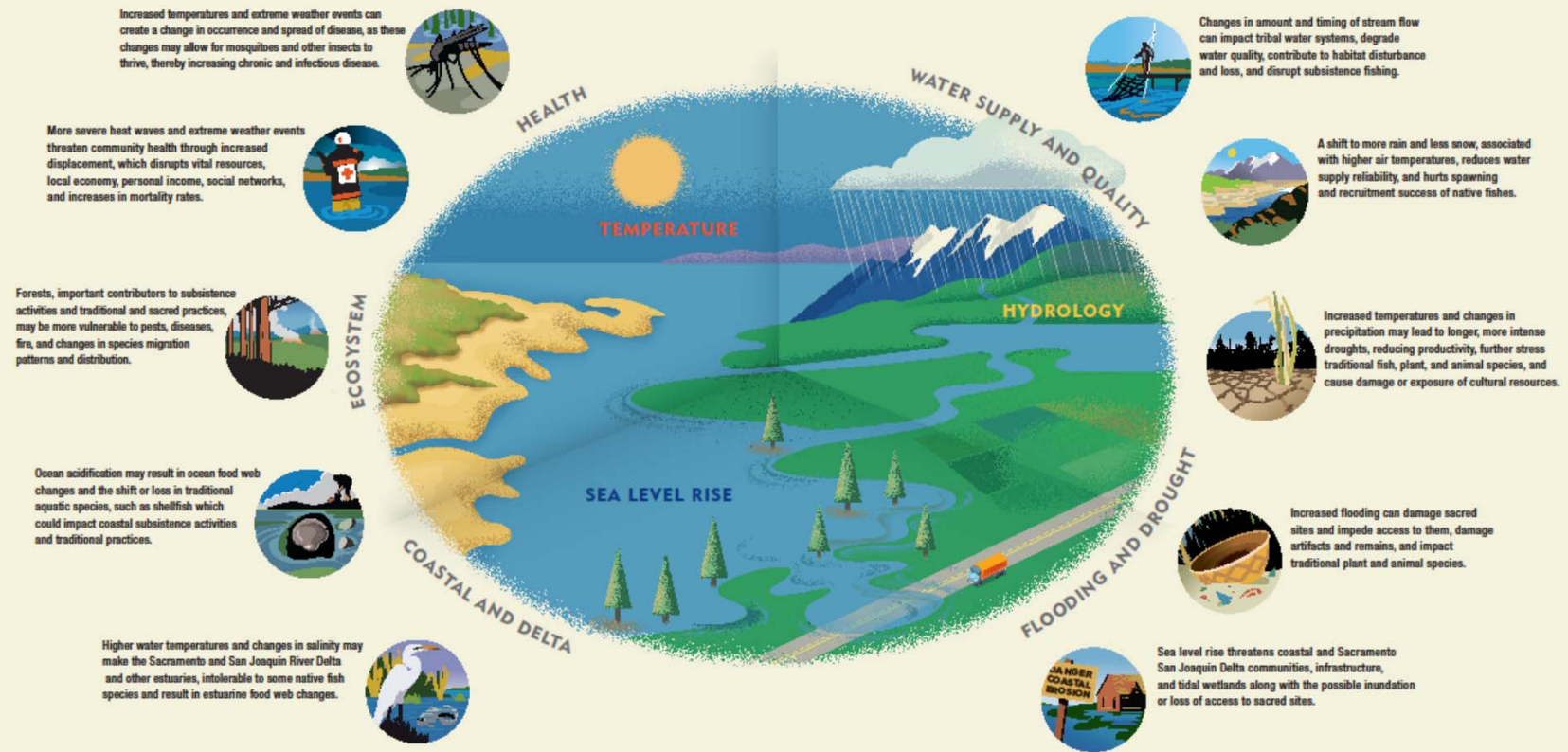


CLIMATE CHANGE EFFECTS IN CALIFORNIA TRIBAL COMMUNITIES

WHAT ARE THE EXPECTED IMPACTS FROM THESE CHANGES?

Climate change is having a profound effect on California's landscape and resources as evidenced by changes in snowpack, variable fire regimes, and sea level rise. Scientific studies show that these changes have and will increase stress on the natural resources that tribal communities depend on.

This diagram was developed to assist tribal communities in identifying areas where they may be vulnerable to the anticipated impacts of climate change on a general scale. These impacts are projected to gradually increase during this century and beyond. Tribes can refer to the tribal matrices to identify vulnerabilities and adaptation strategies to the following impacts*.



*Tribal matrices <http://www.water.ca.gov/climatechange/>

